

PW3

M-Bus Level-Converter for 3 slaves

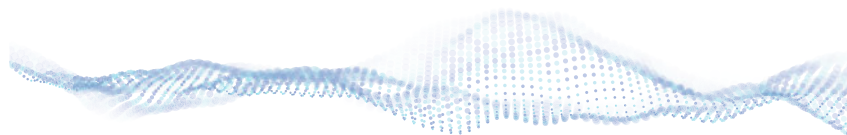


Function of the Master-PW devices

The devices in the PW series are M-Bus master interfaces for networks with 3, 20 and 60 slaves. They are compact in design (wall or rail mounting) and have a broad supply voltage range. The actual operating state is indicated by several LED at the front. All device versions in the PW series are equipped with a RS232 port. The control computer can communicate with the M-Bus meters by the integrated IR optical interface using a ZVEI optical head.

Features

- Integrated RS232C-Interface (PC as master)
- Optional optical interface (laptop / handheld as temporary master)
- Max. 3 slaves (standard loads with 1,5mA)
- External power supply 9-24V DC or AC
- Baudrates: 300 to 9600 Baud
- Overcurrent and short-circuit protection on the M-Bus
- Display for power, data transmission and short-circuit
- Rail or wall mounting





Technical data

Operating voltage	10,8V .. 28V DC 10,8V .. 28V AC
Power consumption	max. 7W
M-Bus voltage (without load)	32V
Max. M-Bus quiescent current	4.5mA (3 unit loads)
Internal bus resistance	approx. 100Ω
Overcurrent threshold	60mA
Transmission speed RS232C	300 .. 9600 Baud
Transmission speed optical	2400 Baud
Galvanic isolation to M-Bus	--
Bit Recovery	--
Temperature range	0..55°C
Dimensions H x W x D	78 x 56 x 117 mm
Protection	IP40