

# WebLog 250

M-Bus Datalogger for 250 devices with touchscreen and webserver



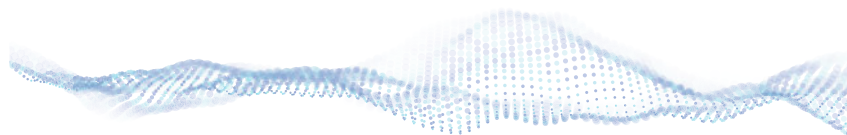
## The New Generation

The new web connectable central unit with touch screen and 1GB memory fits as flexible to your needs as no Relay data logger did before. The WebLog 250 is able to drive 250 meters and manage up to 1000 meters.

The internal database allows you to organize the M-Bus data in a structure which fits your requirements. Another convenient feature is the automatic export of data via email or FTP upload. In addition to the standard interfaces (USB, RS-232C, Ethernet) the customer can also add a WiFi option.

## Features

- M-Bus data logger for 250 meters
- 7" LED Touchscreen
- Remote readout via web browser
- USB, Ethernet, W-LAN, RS232C
- Data export as XML, XLSX, CSV via E-Mail, FTP, USB
- Firmware update via web browser





Remote access via web browser

WebLog M-Bus center

up to 250 meters

## Operation and Features

The WebLog is operated by the 7" wide LED touch screen or with your PC / Laptop via the web browser. The logged data can be exported to an USB flash drive, FTP server or via email to csv, xlsx or xml files. Two inputs for potential-free contact (status indicator) and three relay outputs complete the functionality of the WebLog. By the built in universal power supply (110-250 V AC) and the robust ABS plastic housing with separate terminal compartment, it adapts also perfectly to the requirements of the installation practice. Mounting can be done either on a DIN rail or on the wall. By an optional cylinder lock the device can be secured from unauthorized access. In order to complete the functionality of the WebLog, the software allows a structured user management with different access rights and the management of multiple meter groups and different reading intervals. In addition you can always choose between the implemented languages for the user interface. Installation and configuration of the WebLog central unit is made much more easier by a built in wizzard, that guides you step by step to the finished installation.

Additionally the WebLog 250 can be use as an transparent level converter via USB or RS232C.

## Specifications

Operating voltage	110 .. 250VAC, 47 .. 63 Hz
Power consumption	max. 100W
Temperature range	0 .. 55°C
M-Bus voltage	42 V (Mark without load)
M-Bus Standby current	max. 375 mA
Overcurrent threshold	500mA
Bus impedance	8 Ω
M-Bus baud rate	300 .. 9600 Baud
Galvanic isolation	available
Housing	light grey ABS plastic, protection class IP 52 H x B x T: 264 x 234 x 86 mm mounting on DIN rail or wall, optional cylinder lock
LED status indicators	power, communication, maximum load M-Bus, M-Bus short circuit
Display	7" LED display with resistive touch screen 800 x 480 pixels 262144 colors
Memory	1 GB Flash memory
Interfaces	10/100 MBit Ethernet, USB-Host, USB-Device, RS232 <b>optional:</b> W-LAN
Terminals	3 x terminals for M-Bus, plug-in terminals for floating contacts and relay outputs

## Ordering

Article number	Description
WEBLOG250	web enabled M-Bus center for up to 250 meters
GHZTSH35-2	railmounting set th35 incl. screws
GHZLOCK	cylinder lock incl. two keys

## Accessories

Article number	Description
KA003	2m power cord, safety plug
IWLAN	WiFi adapter, internal with external antenna